



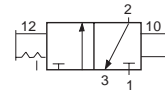
# Energy Isolation Lockout and Lockout with Soft-Start Valves

The **Lockout L-O-X®** valve is used to block the supply and remove the downstream pressure from the circuit or machine and allow the employee to lockout the pneumatic energy for safe machine access.  
The **Soft-Start EEZ-ON®** valve provides gradual re-application of pneumatic energy to prevent rapid equipment movement at startup.

- Lockable only in the OFF position
- Has a full size exhaust port (equal to or larger than supply)
- Simple push/pull of the large handle provides positive direct manual operation
- Fluorocarbon slipper seals for easy shifting, even after long periods of inactivity
- Integrated sensing port for pressure verification or visual indicator option

## 3/2 Manual Lockout L-O-X® Valves

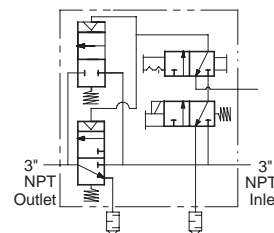
Valve Style	Port Size		Valve Model Number		C <sub>v</sub>	
	1, 2	3	G Threads	NPT Threads	1-2	2-3
Slim-Line	1/4	3/8	YD1523D2002	Y1523D2002	1.84	1.79
	3/8	3/8	YD1523D3012	Y1523D3012	2.67	2.64
Classic	3/8	3/4	YD1523C3002	Y1523C3002	4.74	3.57
	1/2	3/4	YD1523C4002	Y1523C4002	7.10	4.00
	3/4	3/4	YD1523C5012	Y1523C5012	8.26	4.10
	3/4	1 1/4	YD1523C5002	Y1523C5002	13.12	8.98
	1	1 1/4	YD1523C6002	Y1523C6002	16.56	9.52
	1 1/4	1 1/4	YD1523C7012	Y1523C7012	19.25	9.74
High-Capacity	1 1/2	2	YD1523C8002	Y1523C8002	35.53	50.98
	2	2	YD1523C9012	Y1523C9012	40.38	52.23
Stainless Steel Classic	1/4	1/4	D1523B2004	1523B2004	2.14	2.08
	3/8	1/2	D1523B3004	1523B3004	5.79	6.24
	1/2	1/2	D1523B4004	1523B4004	5.79	6.24
	3/4	1	D1523B5004	1523B5004	14.30	17.00
	1	1	D1523B6004	1523B6004	14.30	17.00
	1 1/2	2	D1523B8004	1523B8004	39.00	45.00
	2	2	D1523B9004	1523B9004	39.00	45.00



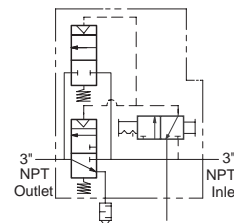
## 3/2 Manual Lockout L-O-X® Valves Manual Pilot Operated

Valve Style	Port Size		Valve Model Number		C <sub>v</sub>	
	1, 2	3	NPT Threads		1-2	2-3
Solenoid Pilot Controlled	3	2 1/2	Y3900A0896W		140	71
Pressure Controlled	3	2 1/2	Y3900A0829		140	71

**\*Voltage:** 24 volts DC. For 110-120 volts AC, 50/60 Hz, replace "W" with a "Z", e.g., Y3900A0896Z. For other voltages, consult ROSS.



Solenoid Pilot Controlled



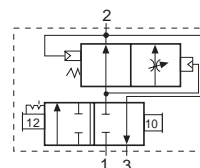
Pressure Controlled



Manual Pilot Operated

## 3/2 Manual Lockout L-O-X® Valves with Soft-Start EEZ-ON®

Valve Style	Port Size		Valve Model Number		C <sub>v</sub>	
	1, 2	3	G Threads	NPT Threads	1-2	2-3
Classic	3/8	3/4	YD1523B3102	Y1523B3102	3.64	2.81
	1/2	3/4	YD1523B4102	Y1523B4102	4.86	3.51
	3/4	3/4	YD1523B5112	Y1523B5112	5.09	2.91
	3/4	1 1/4	YD1523B5102	Y1523B5102	10.08	8.56
	1	1 1/4	YD1523B6102	Y1523B6102	11.07	8.45
	1 1/4	1 1/4	YD1523B7112	Y1523B7112	11.86	8.46



Classic



**Accessories & Options** see page 23 & 24.